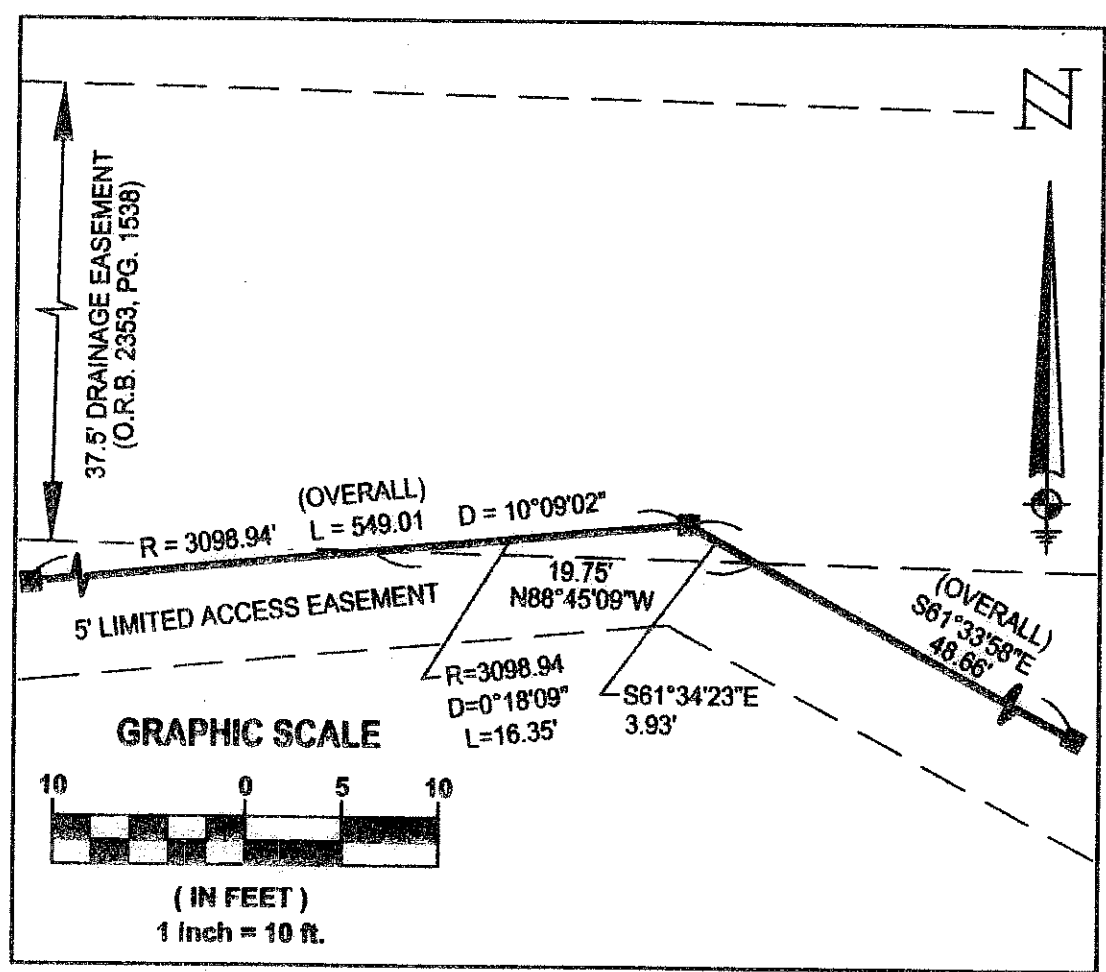
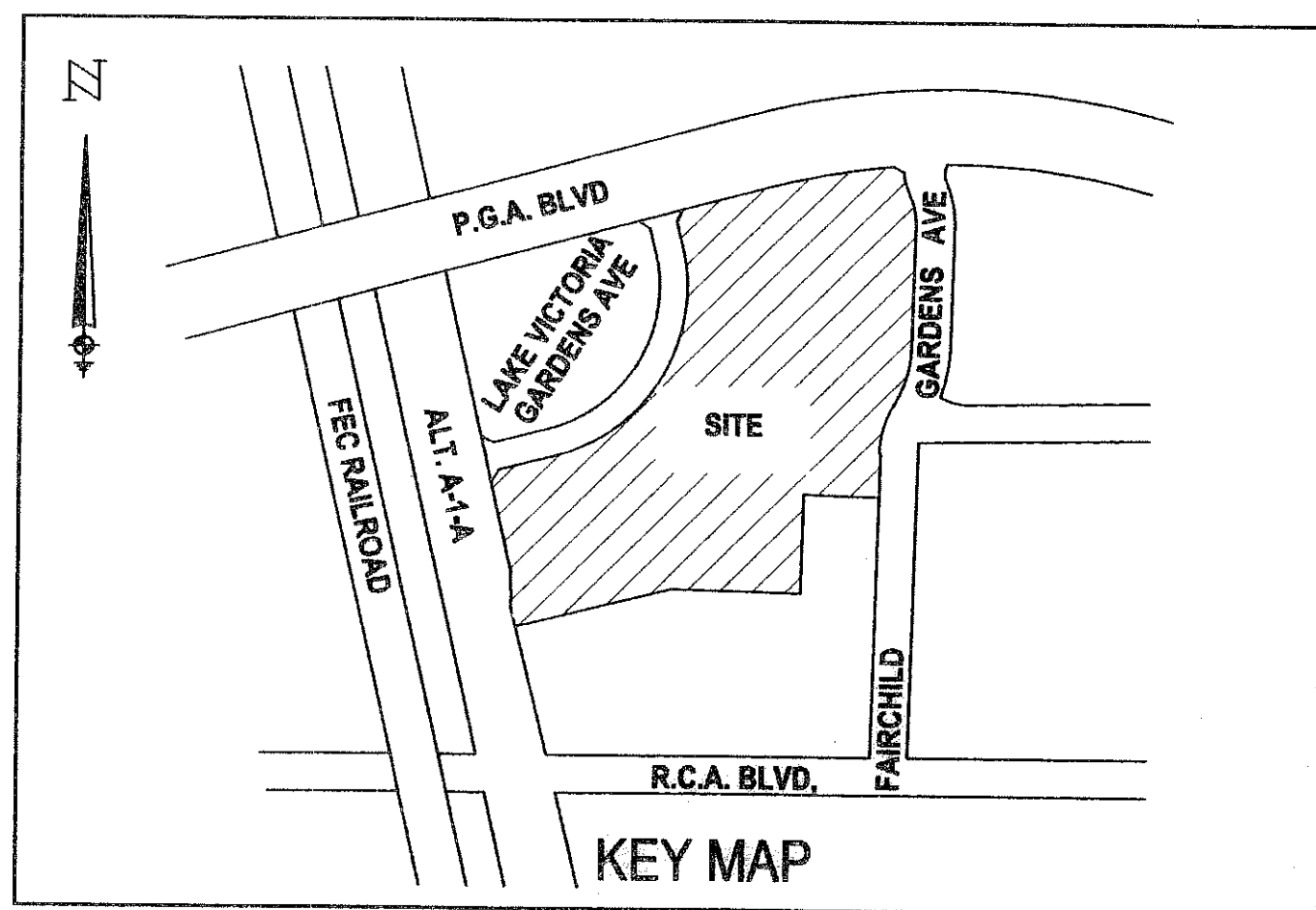


# LEGACY PLACE COMMERCIAL REPLAT

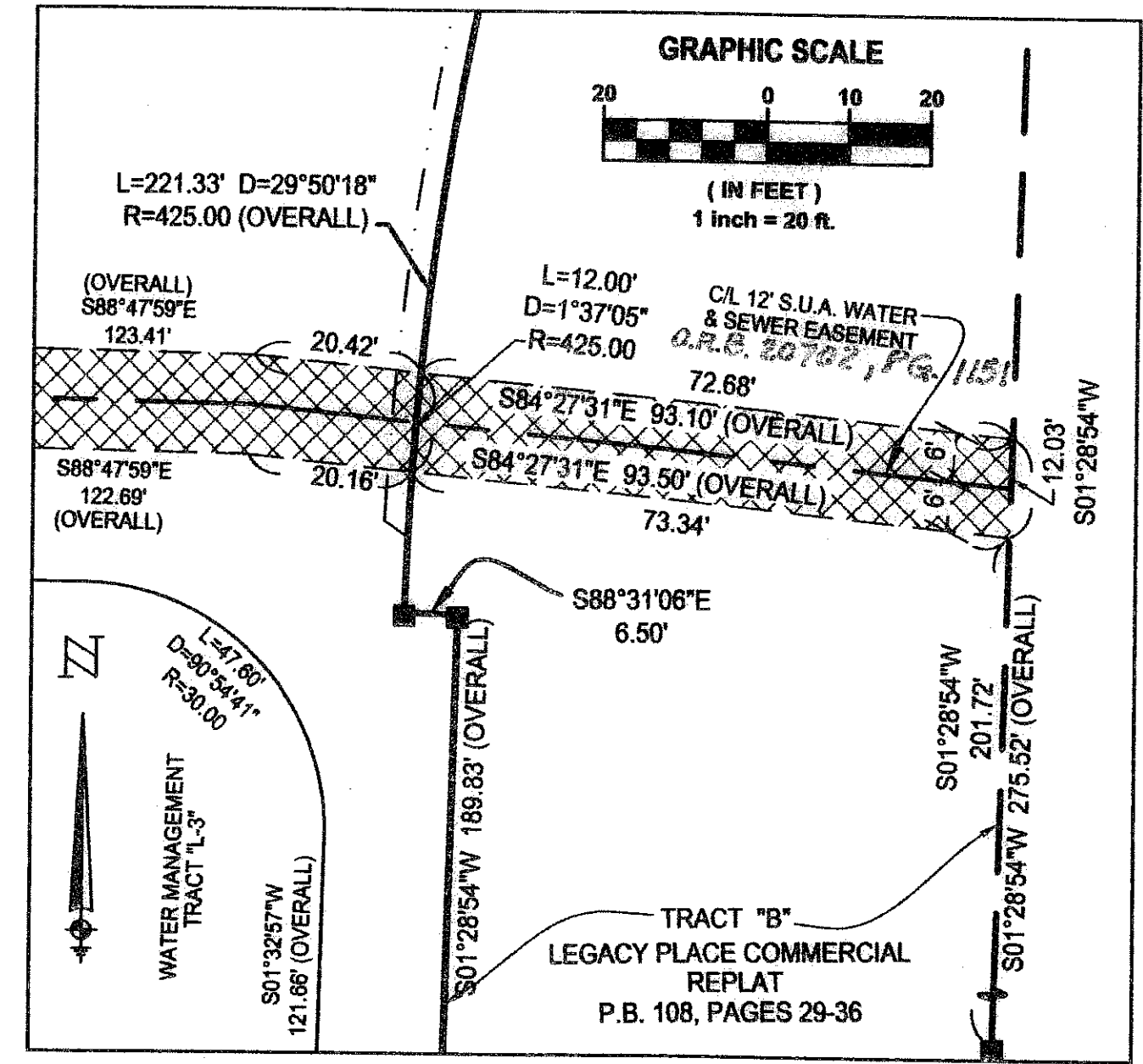
BEING A REPLAT OF TRACT "A" AND WATER MANAGEMENT TRACTS "L-1" THROUGH "L-4", LEGACY PLACE COMMERCIAL,  
 AS RECORDED IN PLAT BOOK 108, PAGES 29 THROUGH 36, PUBLIC RECORDS OF PALM BEACH COUNTY, FLORIDA  
 LYING IN SECTION 6, TOWNSHIP 42 SOUTH, RANGE 43 EAST  
 CITY OF PALM BEACH GARDENS, PALM BEACH COUNTY, FLORIDA  
 SHEET 7 OF 7 AUGUST, 2007

124

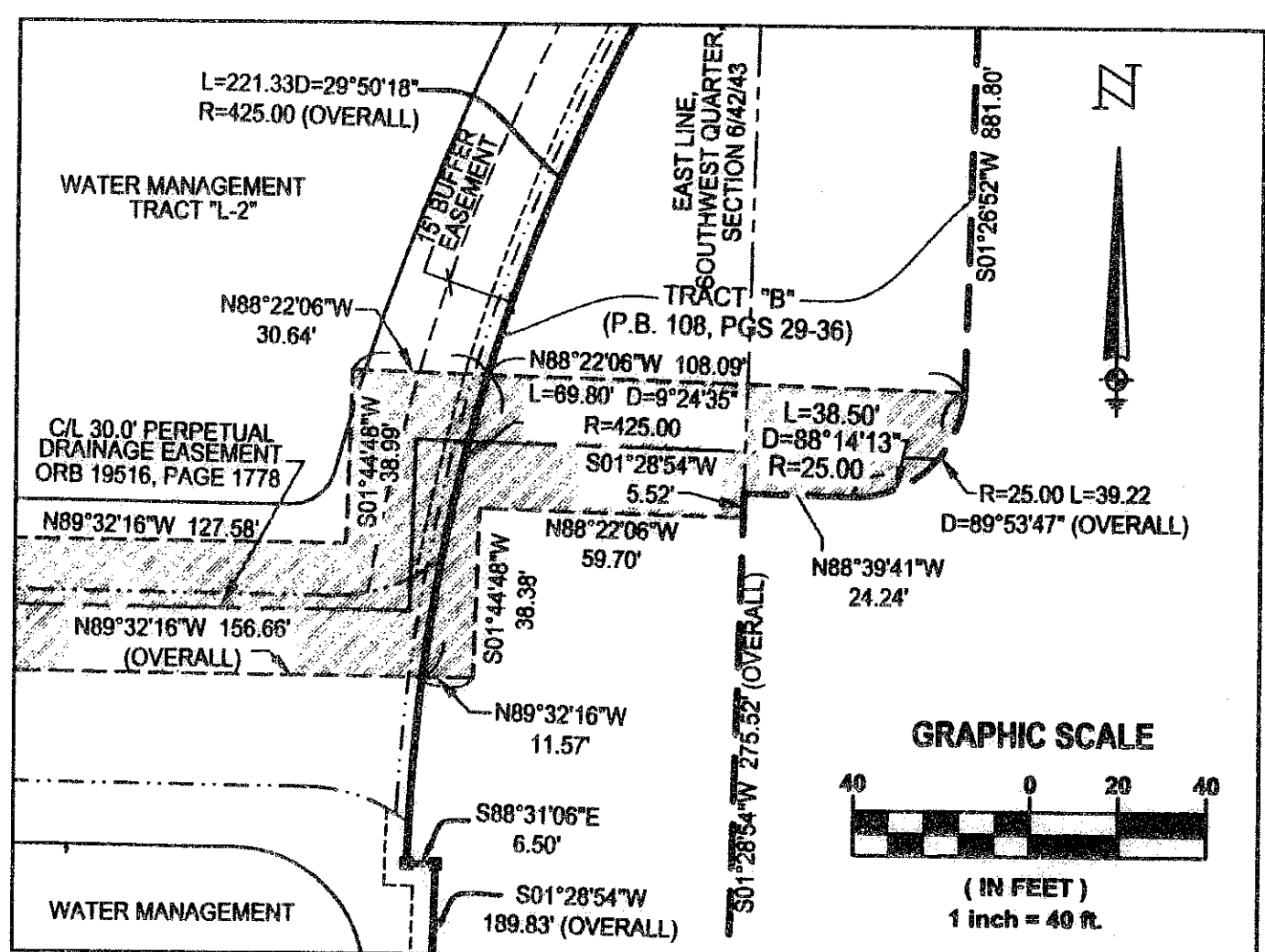
STATE OF FLORIDA  
 COUNTY OF PALM BEACH  
 This plat was filed for  
 record at \_\_\_\_\_ M. this day  
 of \_\_\_\_\_, 2007 and duly  
 recorded in Plat Book No. \_\_\_\_\_  
 on Pages \_\_\_\_\_ thru \_\_\_\_\_  
 Sharon R. Bock  
 Clerk and Comptroller  
 By \_\_\_\_\_ D.C.



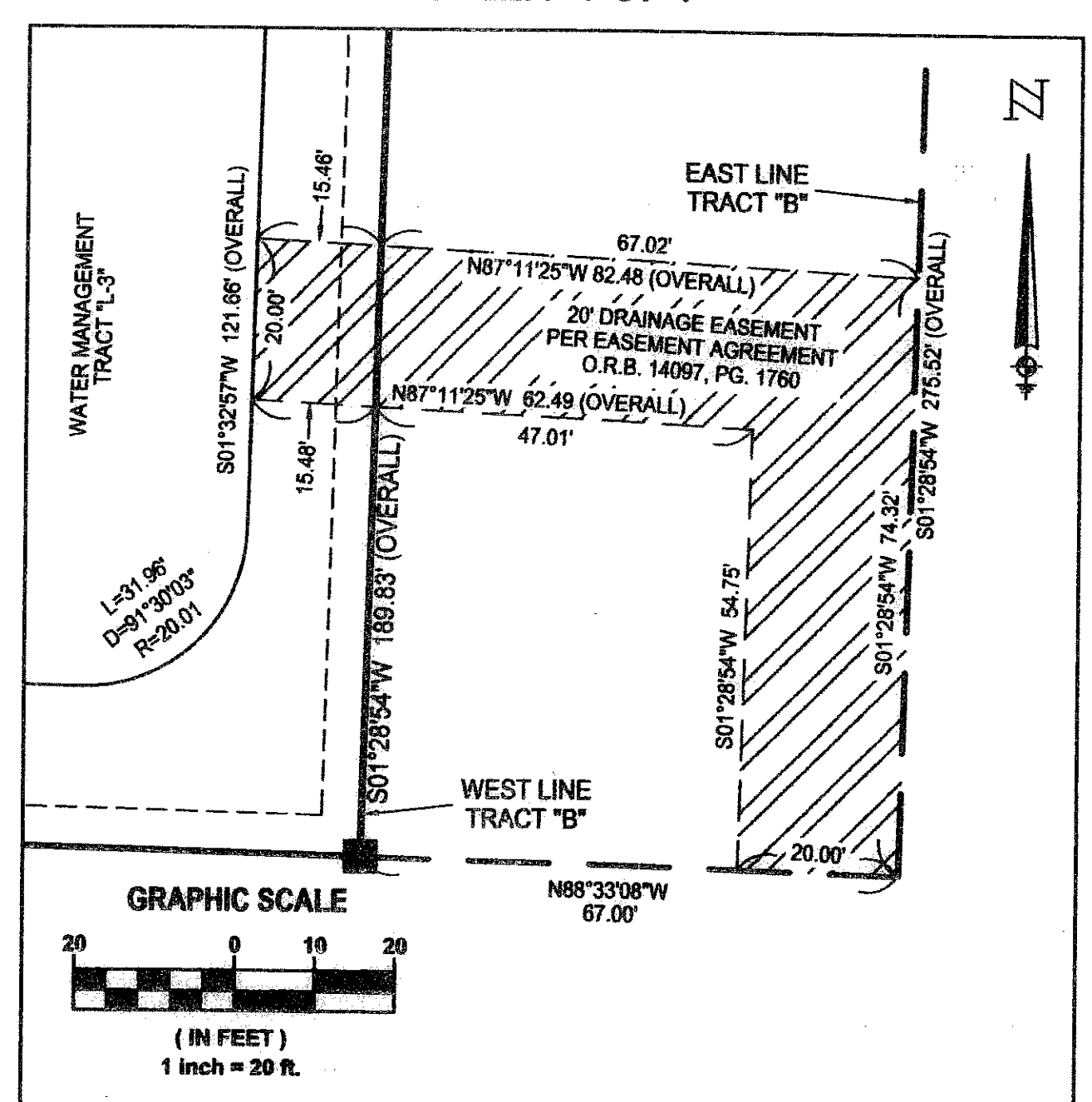
DETAIL 'A'  
 37' DRAINAGE EASEMENT  
 (O.R.B. 2353, PG. 1127)  
 SEE SHEET 2 OF 7



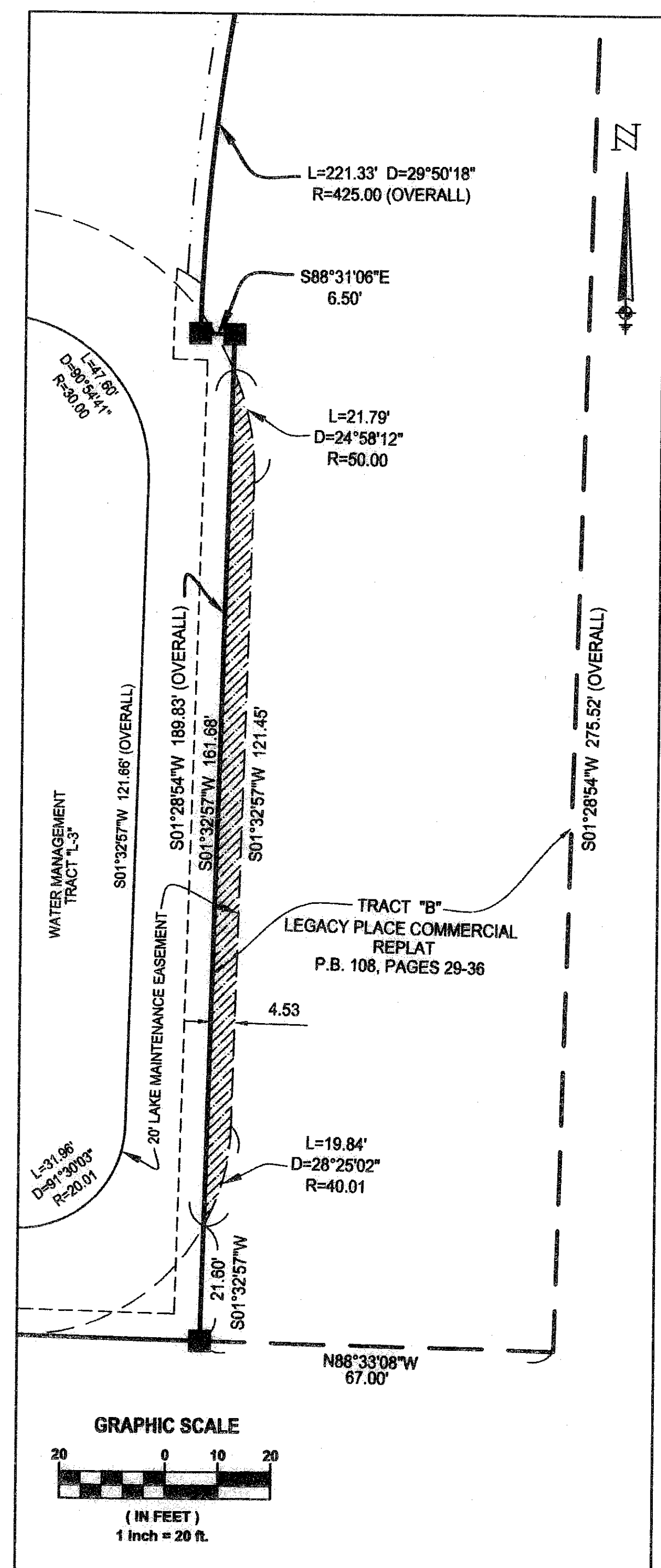
DETAIL 'C'  
 12' S.U.A. WATER AND  
 SEWER EASEMENT  
 SEE SHEET 4 OF 7



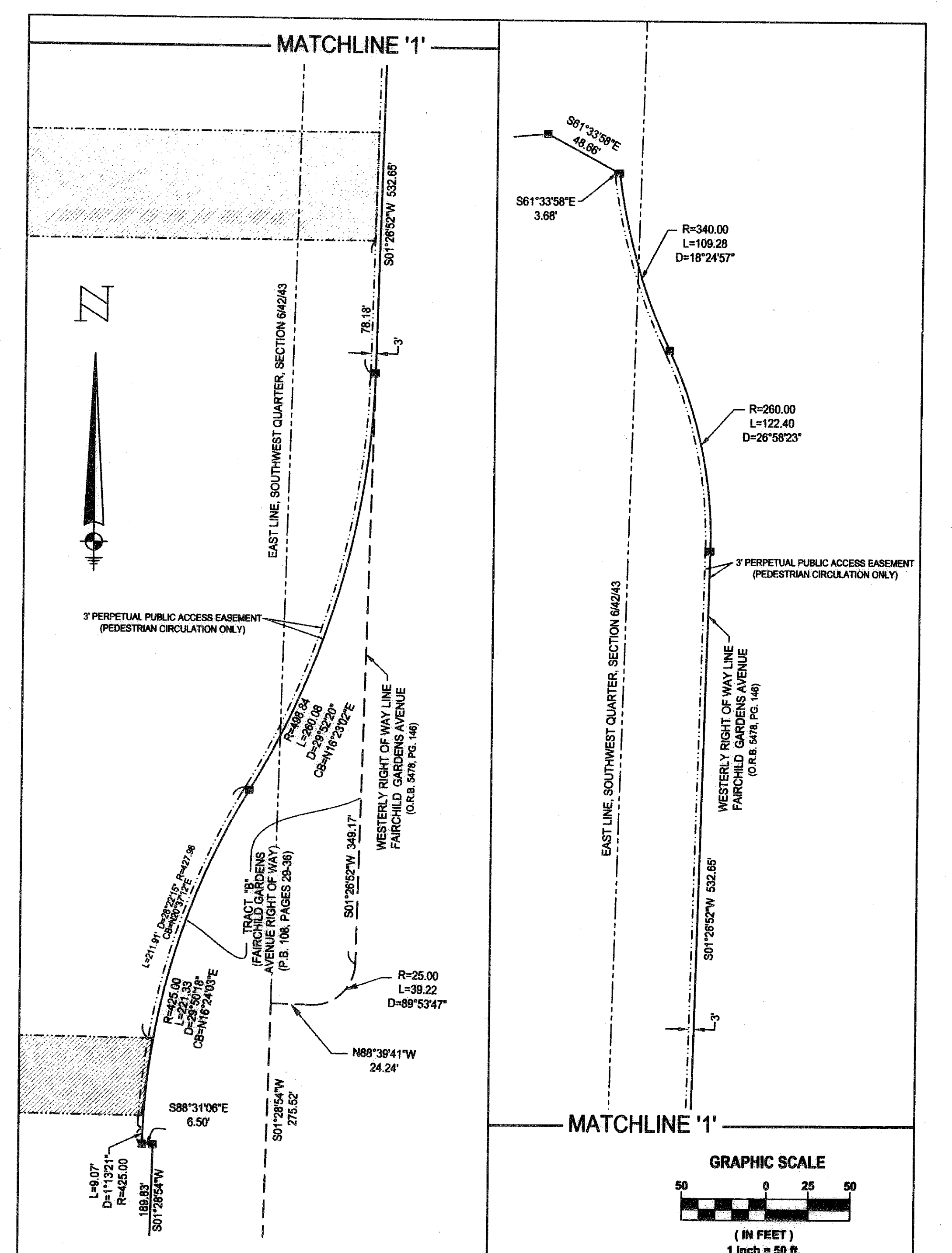
DETAIL 'B'  
 30' PERPETUAL DRAINAGE EASEMENT  
 (O.R.B. 19516, PAGE 1778)  
 SEE SHEET 4 OF 7



DETAIL 'D'  
 20' DRAINAGE EASEMENT  
 PER EASEMENT AGREEMENT  
 (O.R.B. 14097, PG. 1760)  
 SEE SHEET 4 OF 7



DETAIL 'E'  
 20' LAKE MAINTENANCE EASEMENT  
 SEE SHEET 4 OF 7



DETAIL 'F' OF 3' PERPETUAL  
 PUBLIC ACCESS EASEMENT  
 SEE SHEETS 2-4 OF 7

**LIDBERG LAND SURVEYING, Inc.**  
 675 West Indian Town Road, Suite 200,  
 Jupiter, Florida 33458 TEL: 561-746-8454

CAD E:\AUTOCAD2000\064243\00-154-SEMLER\DWG\00-154-306.DWG			
REF	FR	PG	JOB 00-154 (306)
FLD	S.F.B.		DATE 02/03/2006
OFF	D.C.L.	SHEET 7 OF 7	DWG 000-154P